



Phone: 775.832.2523
 Fax: 775.548.9801
 ComsiteHardware.com

P.O. Box 3951
 Incline Village, NV
 89540

Your Source for Communications Site Hardware



Qwikmount



Qwikmount II



Canopy AP Mount



Qwikport



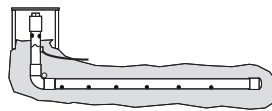
Qwikport Jr.



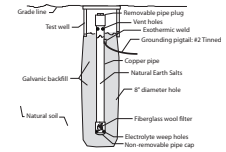
Round Member Coax Support



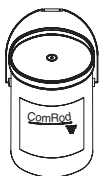
Test Well



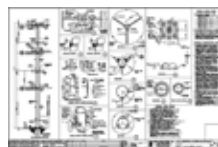
ComRod - Horizontal



ComRod - Vertical



ComRod Galvanic Backfill



Tower Drawings

Phone: 775.832.2523 • Fax: 775.548.9801 • ComsiteHardware.com
 P.O. Box 3951 • Incline Village, Nevada 89540



Manufacturer of Wireless Components Product Highlights



QWIKMOUNT II

The Qwikmount II is the perfect answer when mounting smaller PCS, cellular, broadband wireless and two way antennas on a rooftop. With just one bolt to assemble, the low-cost Qwikmount II is ready to go in minutes. Reduced installation time means dollar savings in crew time, and the ease of relocation means your site components can move quickly if your needs change. Like the original Qwikmount, the Qwikmount II is water ballasted and constructed of rugged cross-linked polyethylene to last for many years. No need for rubber pads as the plastic base and rounded edges protect the roof from damage. No need for concrete blocks or heavy wood shipping crates. The 42 inch diameter tank weighs only 30 lbs. empty, but 209 lbs. when filled with water. The mast is constructed of 6061 T-6 aluminum for lasting protection.

Specifications

- Tank Weight (empty) 30 lbs.
- Shipping Weight (with mast)..... 34 lbs.
- Standard Mast Size..... 1-1/4 inch pipe (1.66 O.D.) X 5 feet
- Roof Load 23 psf
- Maximum Overturning Moment 258 ft/lbs.
- Ballast..... 22 gallons of water (with antifreeze in areas subject to freezing)
- Weight of base (full)..... 209 lbs.
- Area 42 inch diameter

Part #	Description	Height	Weight
QMII-5	Qwikmount II	5 ft.	30 lbs.
QMII-8	Qwikmount II	8 ft.	33 lbs.



CANOPY AP MOUNT

The rugged mount is specifically designed to fit both the original Canopy AP and the Canopy 9000 and provides for mounting the individual units at 180 degrees, 0 degrees, 60 degrees or 45 degrees on six vertical 1-1/4" aluminum pipes. This patent-pending product attaches to any sized mast 1-1/4 inch nominal pipe size or larger. The mount comes with hardware to clamp to pipes up to 5-1/2 inch O.D. It can also be attached to a mast of any diameter utilizing steel banding (not included). The sectional design allows the mount to be split into two 1 to 3 sector mounts for mounting to a wall or tower leg. The mount is constructed of steel, with a 10 year warranty on the powder coat finish so you never have to worry about rust. Combine this mount with a Qwikmount II, and your AP will be up and running in minutes.

Part #	Description	Height	Weight
CANOPYMT	Mount for Canopy AP	14-1/2"	30 lbs.



Manufacturer of Wireless Components Product Highlights

QWIKPORT & QWIKPORT JR.

The Qwikport is a lightweight, seamless roof cable entry with 24 integral entry ports. Why use a heavy, expensive steel roof cable entry that requires separate entry ports? The Qwikport can be carried by one man up an elevator to a rooftop. Seamless construction provides protection against leakage. The 24 four-inch entry ports are part of the unit, rather than an expensive add-on. The ports are completely sealed until opened with the hole saw which is included with each unit, so unused ports can never leak. 12 ports are located on opposite sides to eliminate the need for 180 degree cable bends. The opposing ports are also offset for ease of installation. (Ports accept standard four-inch boots – not included.) Built-in flashing reduces the time required to install the roof entry. Unlike competing products which have a small hole in the side for hand access, the entire top of the Qwikport is easily removed for cable installation.

A 20" ground bus bar is provided on each port side to ground the coax lines. Also available is the Qwikport Jr. with 12 four-inch entry ports. (13" bus bar included.)

Part #	Description	Overall Height
QWKPR	Qwikport (24 ports)	38"
QWKPR-JR	Qwikport, Jr. (12 ports)	27-1/2"



ROUND MEMBER COAX SUPPORT

these hot-dip galvanized steel brackets are used to support any multiple of three cables on large diameter round members. All brackets have both 3/8" and 3/4" holes to allow use of either snap-in or bolt-in hangers. They are punched to allow mounting to a wood pole with lag bolts, and are slotted to allow mounting to round members of any size with up to 1/2" banding material.

Part #	Description
RM-3	3-Hole Coax Support





Manufacturer of Wireless Components Product Highlights

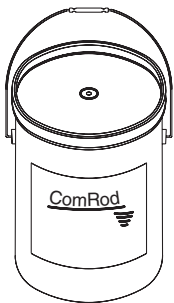
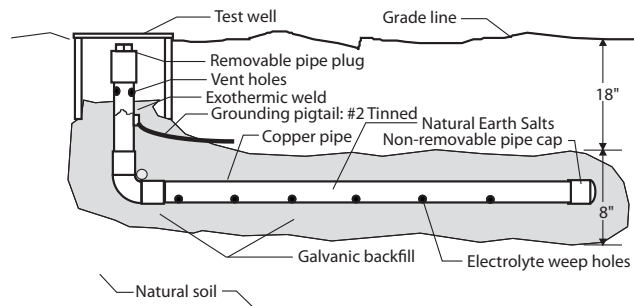
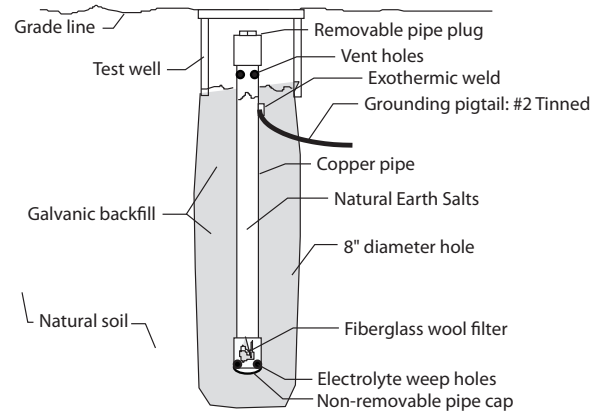
COMROD™

Constructed of sturdy copper tubing, the ComRod™ is built to last. A heavy #2 tinned "pigtail" provides for easy connection to other parts of the grounding system. Because the pigtail is attached via factory exothermic weld directly to the copper tube, it has the best physical and electrical bond possible. This is your assurance of a reliable system.

ComRods™ provide solutions to your most difficult grounding problems when used in conjunction with ComRod™ Galvanic Backfill. This revolutionary product contains a portion of bentonite for its moisture retention properties, and balances the mixture with materials which increase conductivity. These added materials alleviate the shrinkage problems caused by using pure bentonite. Because of this special mixture, ComRod™ Galvanic Backfill actually enhances the electrical contact with the earth.

ComRod™ Ground Rods are provided in kit form and include Ground Rod, Inspection Well and ComRod™ Galvanic Backfill.

Part #	Description
CRV-10	Vertical Rod 10' Long
CRH-10	Horizontal Rod 10' Long



COMROD™ GALVANIC BACKFILL

ComRod™ Galvanic Backfill contains a portion of bentonite for its moisture retention properties, and balances the mixture with materials which increase conductivity. These added materials alleviate the shrinkage problems caused by using pure bentonite. Because of this special mixture, ComRod™ Galvanic Backfill actually enhances the electrical contact with the earth.

ComRod™ Galvanic Backfill may be used in conjunction with ComRod™ Ground Rods or with standard grounding systems to enhance conductivity with whatever soil conditions are encountered.

Pkg. Qty.	Part #	Description
1	CFILL	5 Gallon Bucket ComRod™ Backfill

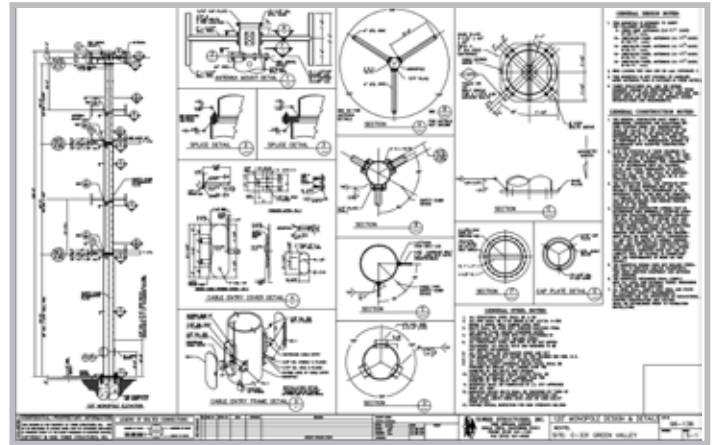


Manufacturer of Wireless Components Product Highlights

TOWER DRAWINGS

Comsite Hardware, Inc. has access to most drawings of towers, monopoles, foundations, and buildings made by Tower Structures, Inc., from 1990-2007.

Drawings are available in electronic format for \$500 per site. For most towers, design wind loads, antenna loads, and design code are included. For more information, submit a quote request for and check Tower Drawings.



TEST WELL

Manufactured using a unique low pressure structural foam process. Dimensions are 10 inch diameter at top, 11-1/2 inches inside diameter at bottom, 13 inch OD diameter on lip at bottom, 10-1/2 inches high. Color green. For use in non-vehicular traffic areas only. Can be used with conventional ground rods or chemical rods for testing resistivity. Weight 4-1/2 lbs.